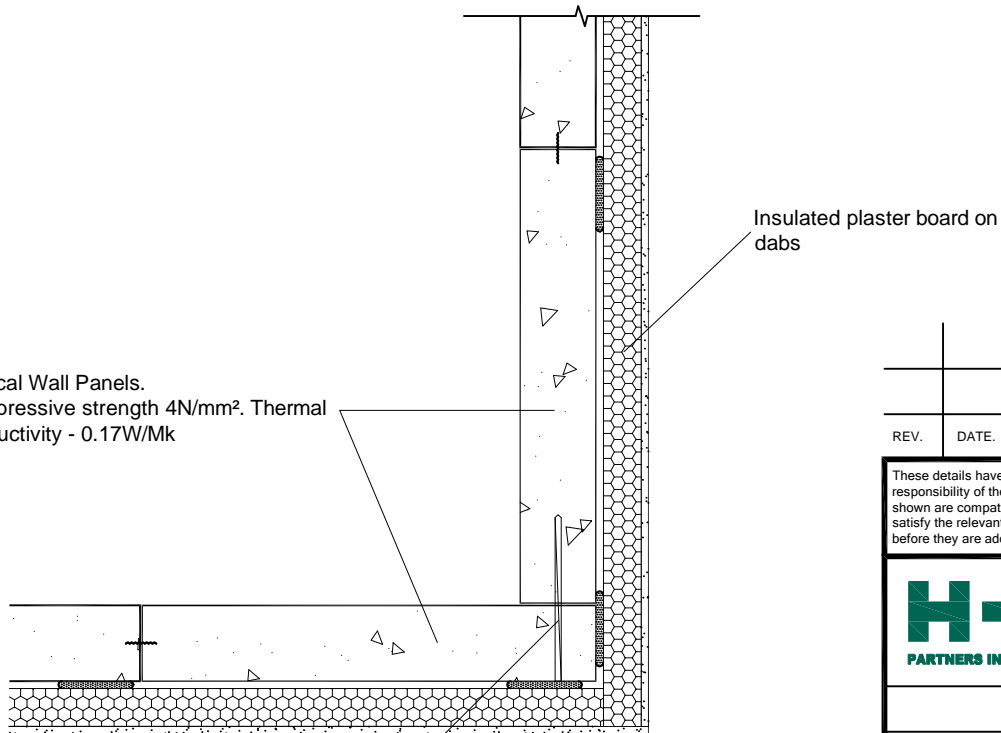


Integral Garage side

Dwelling side

Vertical Wall Panels.
Compressive strength 4N/mm². Thermal conductivity - 0.17W/Mk



220mm helical ties at corners installed at 300mm vertical centres.

Integral garage - junction with external wall and internal corner.

REV.	DATE.	DESCRIPTION.	BY.

These details have been produced for guidance only. It is the responsibility of the building designer to ensure that the details shown are compatible with the overall building design and will satisfy the relevant parts of the Building Regulations applicable before they are adopted into the project design.



H+H UK Limited
Technical Services Dept.
Celcon House
Ightham, Sevenoaks
Kent, TN15 9HZ.
Tel +44 (0)1732 880580
Email tsd@hncelcon.co.uk

TITLE Vertical Wall Panel detail
Integral garage wall junction

DWG No. VED044

DRAWN BY MAB CHECKED BY SJK

DATE 13/7/21 SCALE 1:100 REV.NO. 00